



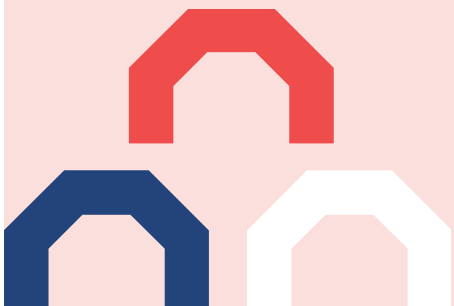
Beccy Summers

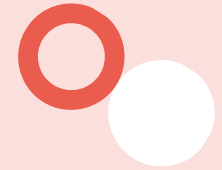
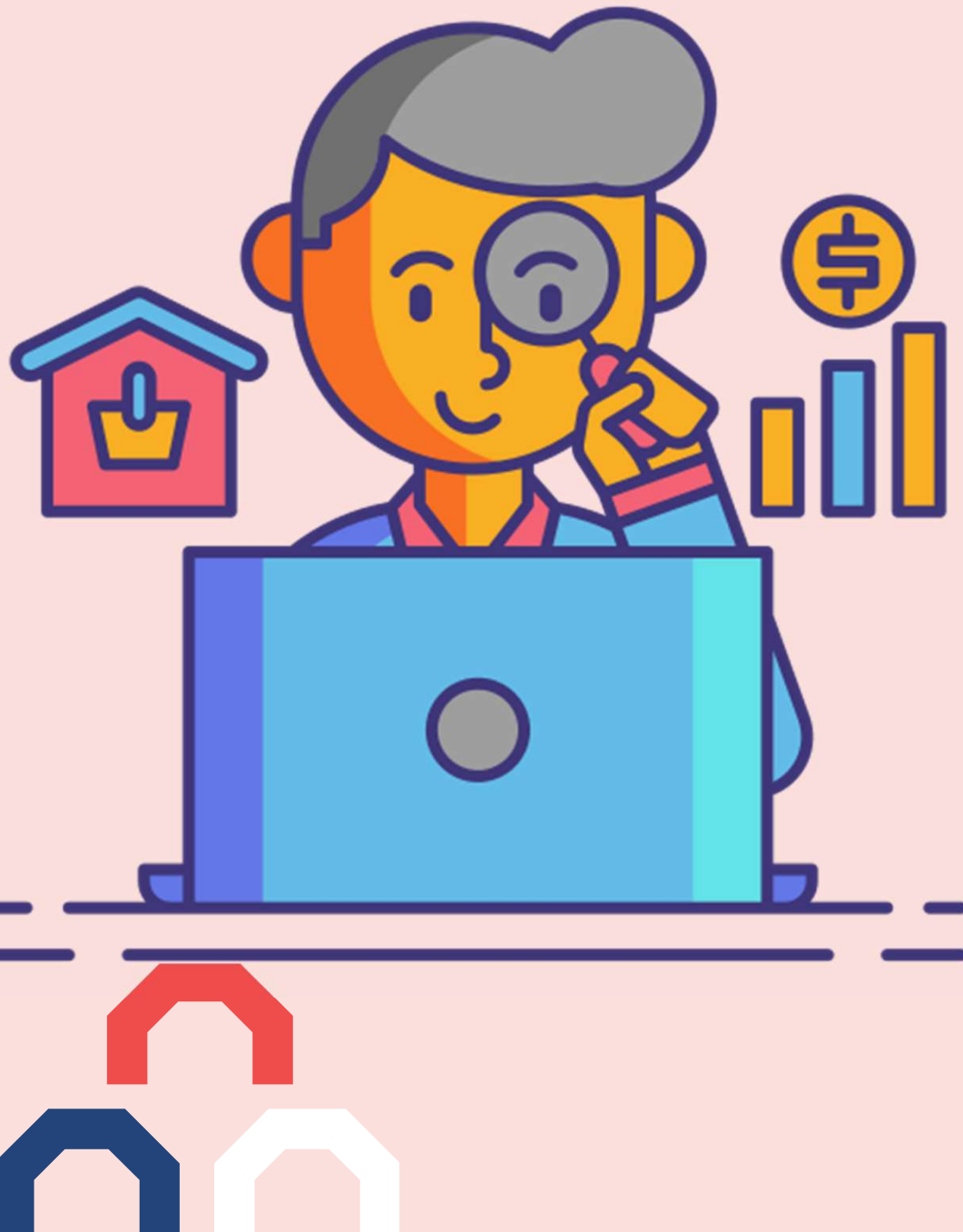
University of Exeter





Meet the needs of patient,
carers and their families.



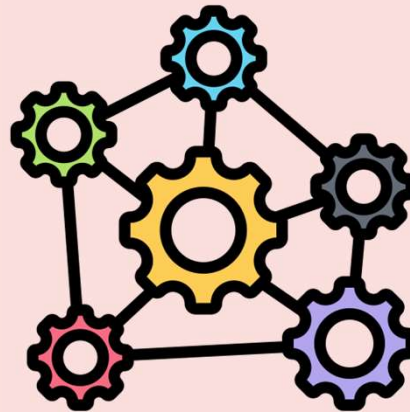


Improve people's lives.

**Improve the quality of
health and social care.**



Mental health



Complex care



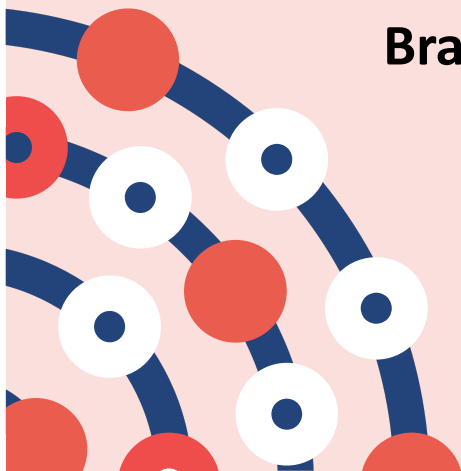
**Children's health and
maternal mental health**

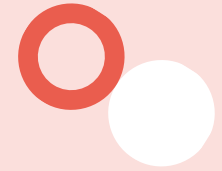


**Brain development
conditions**

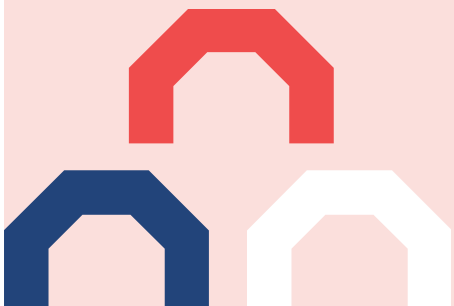


Diabetes





Patient and Public Involvement





Waiting times for
neurodivergent diagnosis.

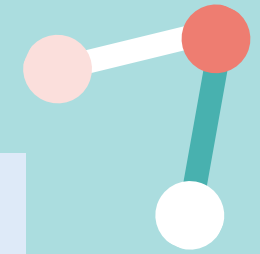
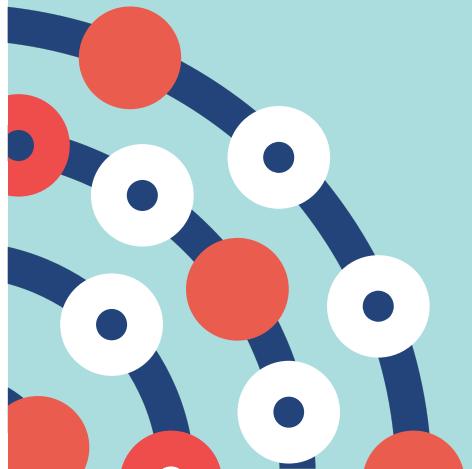


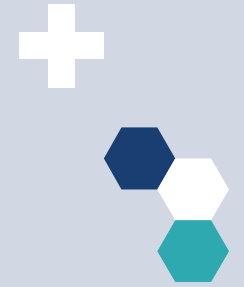
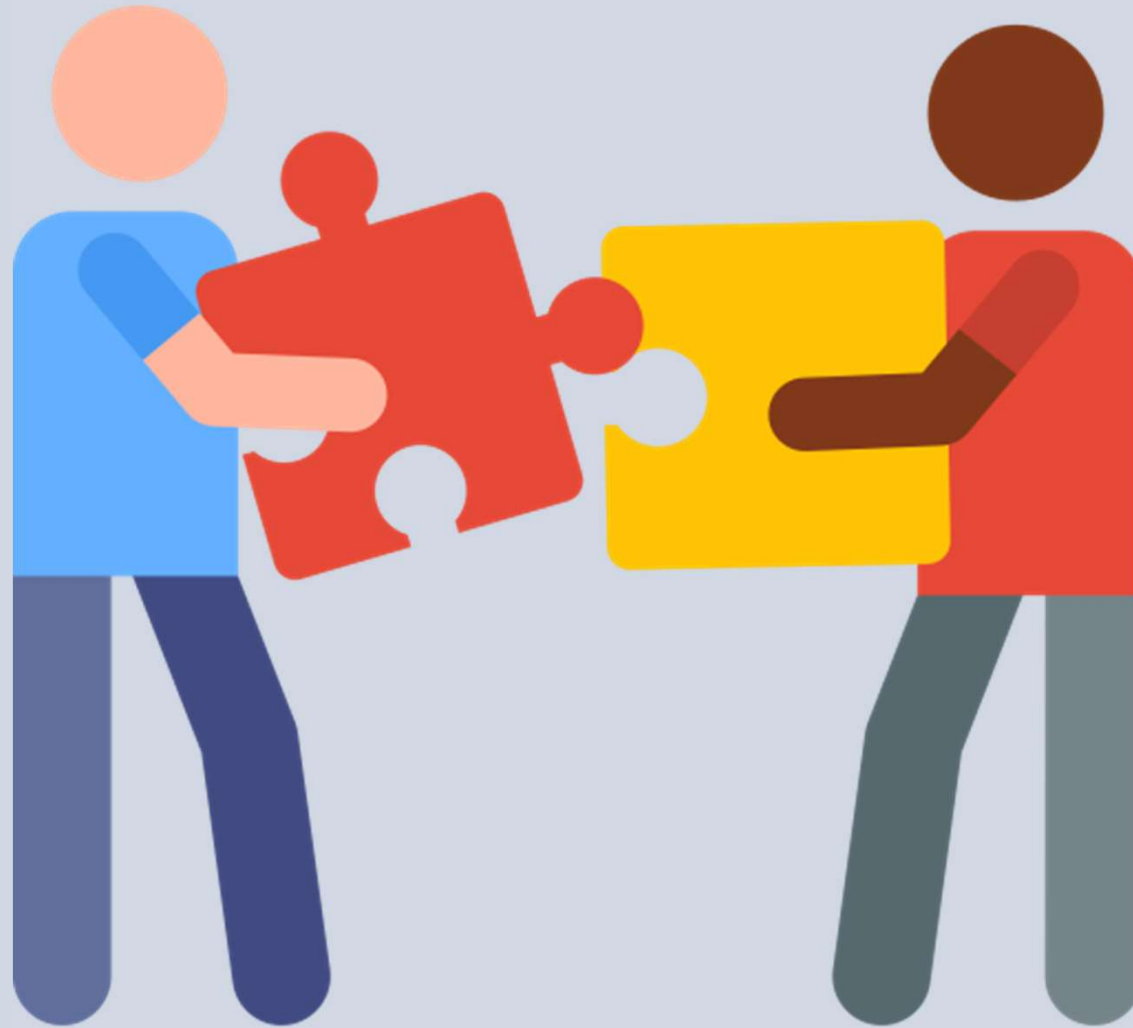
Comfortable interview
approach



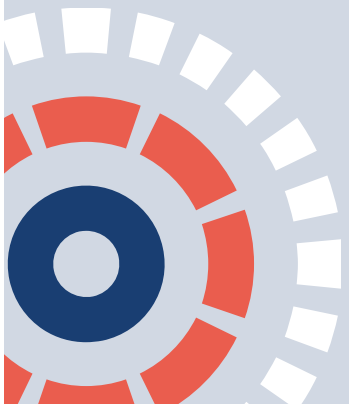


What health and social care research should we do next?





Working together



Please feel free to ask me any questions



r.l.summers@exeter.ac.uk

Useful links to find out more:

- [NIHR PenARC](#)
- [Patient & Public Involvement & Engagement - PenARC \(nih.ac.uk\)](#)
- [Home - Exeter Biomedical Research Centre \(nih.ac.uk\)](#)
- [Patient & Public Involvement - Exeter Biomedical Research Centre \(nih.ac.uk\)](#)